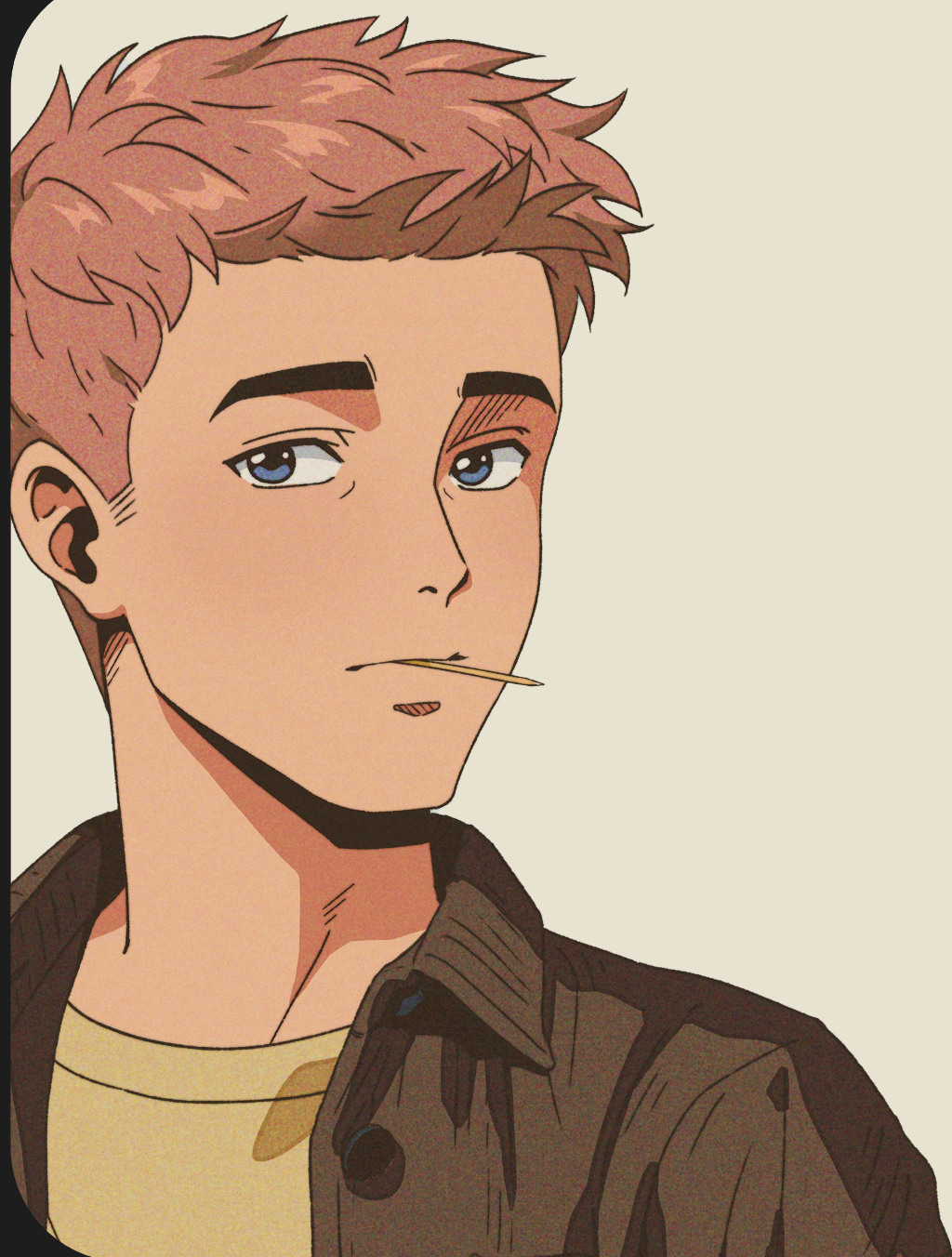
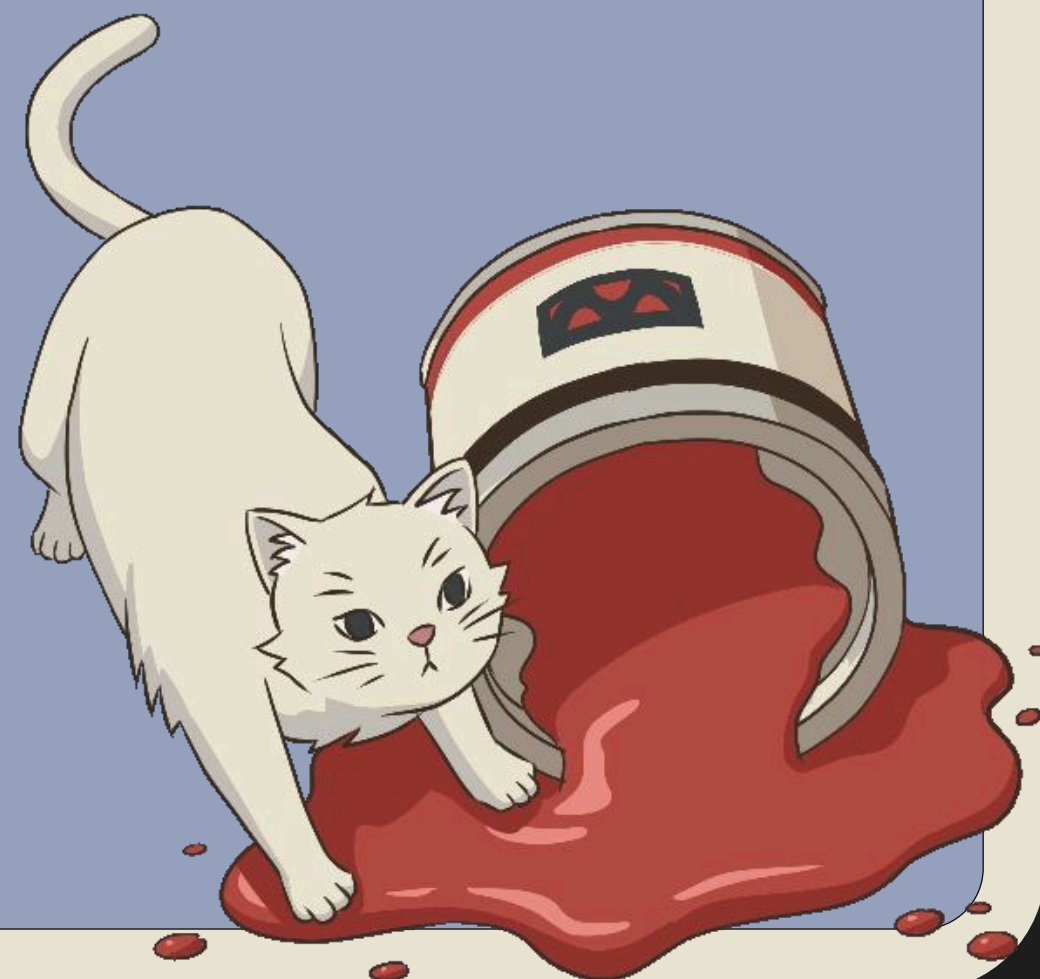




CREATOR KIT

Updated January 2025 By [pxlmiguel](#)



WELCOME TO THE PERSONA CREATOR KIT!

This kit was put together to help all of you Persona Creators out there that need to create assets with your NFT, but don't necessarily have the design experience to put them together in a way that is consistent with the Persona Brand!

In this file you'll find a few customizable templates that follow the persona guidelines are allow you to quickly generate an asset.

If you have any other suggestions or requests feel free to reach out to me on [twitter](#) / [x](#).

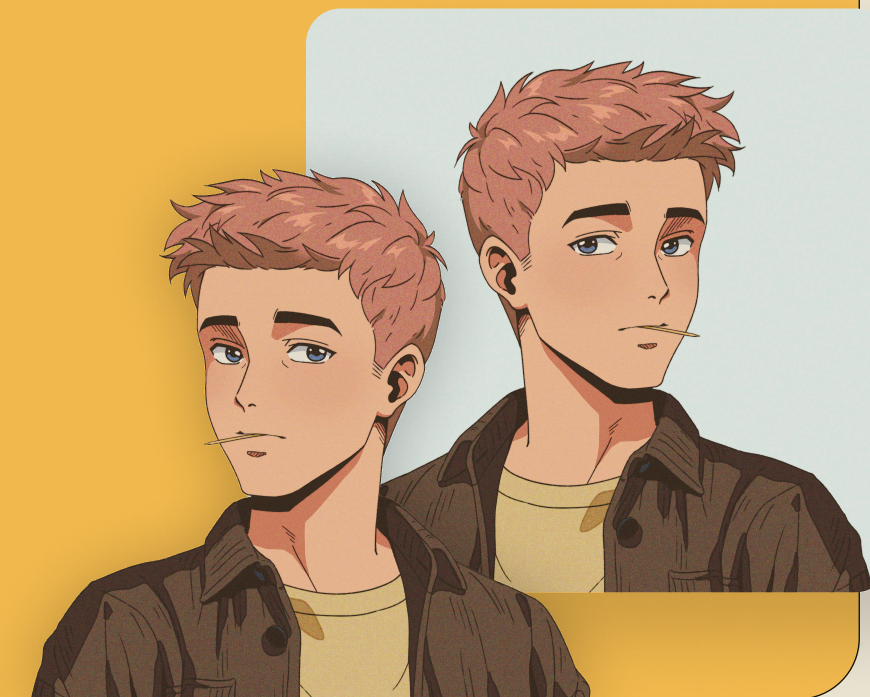
Enjoy!

01 - BEFORE YOU START

Before you start, make sure you have:

- 1 Asset of your persona NFT
- 1 Asset of your persona NFT without background

There are several tools and tutorials available out there that will allow you to achieve the desired result. Use what you're most comfortable with.



02 - SET UP

First things first, open your design tool of choice, and choose whether your post will be square(1:1) or landscape(16:9). There is a folder for each inside the kit, choose the one that applies to your case.

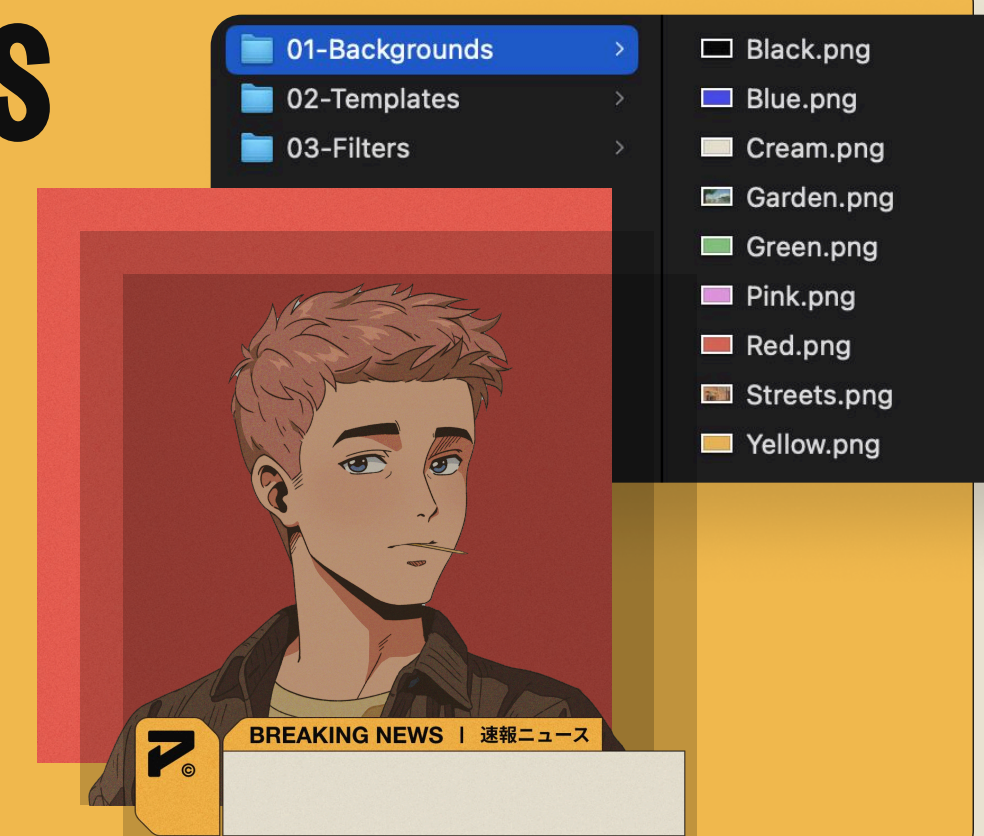
Landscape
Square

03 - SELECT YOUR LAYERS

Inside the aspect ratio folder you just selected you will see 3 folders:

- Backgrounds
- Templates
- Filters (Optional)

You can choose one of each, add your PFP in between the background and template layers, and customize it as you please!
Have Fun!



ERM... HELP?

Reach out
[@pxlmiguel](#)

[CREATORS.TIMFALL.XYZ](#)